

One-stop Solutions for Cell Culture and Identification

— High-Performance Cell Culture and Detection



One-stop solution

Includes essential reagents required for experiments



Efficient and convenient

Optimized components ensure a streamlined and effective experimental process



Reliable experimental data

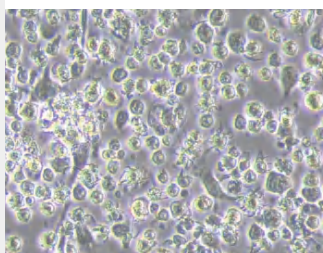
Stringent quality control ensures excellent reproducibility

Elabscience® Cell Identification Kits

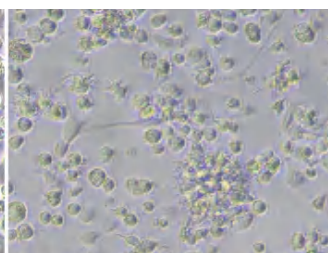
| Product Name | Cat. No. | Size | Price |
|--|----------|---------------|------------|
| Mouse Bone Marrow-derived Dendritic Cells Culture and Identification Kit | XJM003 | 20/200 Assays | \$385/728 |
| RAW 264.7 Polarized M1 Macrophage Culture and Identification Kit | XJM004 | 20/200 Assays | \$475/962 |
| Human Th1/Th2 Flow Cytometry Staining Kit | XJH001 | 20/100 Assays | \$473/1137 |
| Mouse Th1/Th2 Flow Cytometry Staining Kit | XJM001 | 20/100 Assays | \$243/941 |
| Human Th17 Flow Cytometry Staining Kit | XJH002 | 20/100 Assays | \$528/928 |
| Mouse Th17 Flow Cytometry Staining Kit | XJM002 | 20/100 Assays | \$228/843 |

Morphological Observation: BMDCs and M1 Macrophages

Immature DC



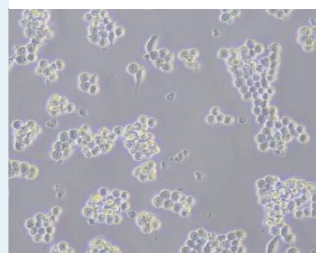
Mature DC



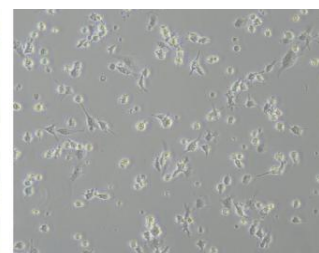
BMDC Morphologies:

Microscopic observation results of C57/BL6 mouse bone marrow cells cultured and identified using [Mouse Bone Marrow-derived Dendritic Cells Culture and Identification Kit \(XJM003\)](#) after 7 days of differentiation culture (left) and 1 day of maturation induction after 7 days of differentiation (right).

Control



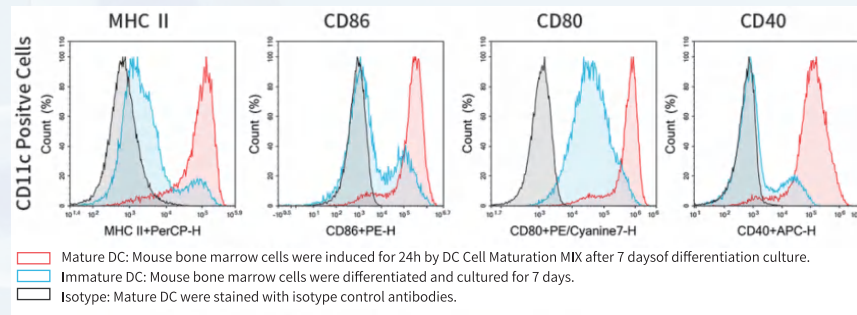
M1-Mix



M1 Macrophage Morphologies:

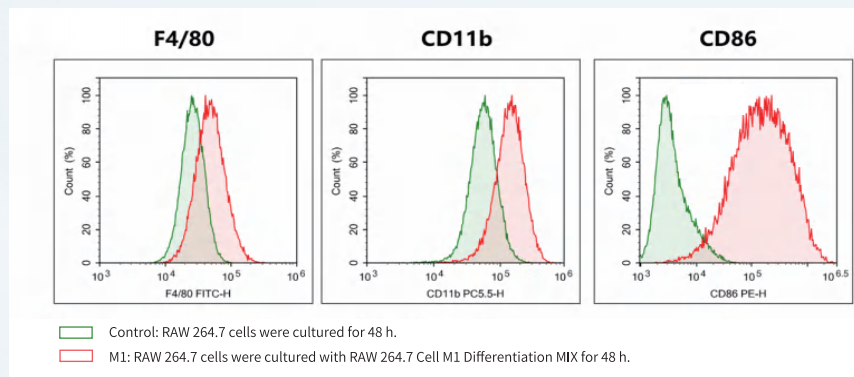
Microscopic observation results of untreated RAW 264.7 cells (left) cultured for 48 h and RAW 264.7 cells polarized using [RAW 264.7 Polarized M1 Macrophage Culture and Identification Kit \(XJM004\)](#) for 48 h of polarization induction (right).

Results of Mouse Bone Marrow-derived Dendritic Cells (BMDC) Culture and Identification Kit



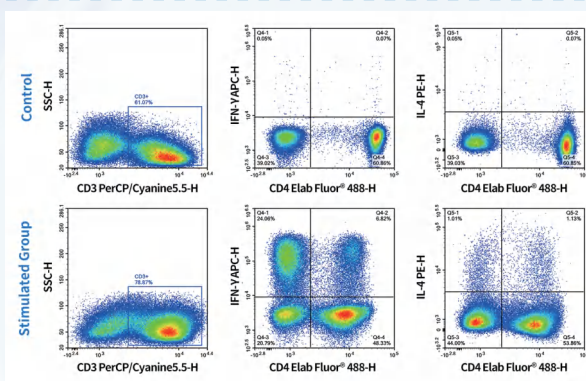
Phenotypic Analysis of BMDC : Flow cytometry analysis of C57/BL6 mouse bone marrow cells cultured and identified using [Mouse Bone Marrow-derived Dendritic Cells Culture and Identification Kit \(XJM003\)](#) after 7 days of differentiation culture and 1 day of maturation induction following 7 days of differentiation.

Results of RAW 264.7 Polarized M1 Macrophage Culture and Identification Kit

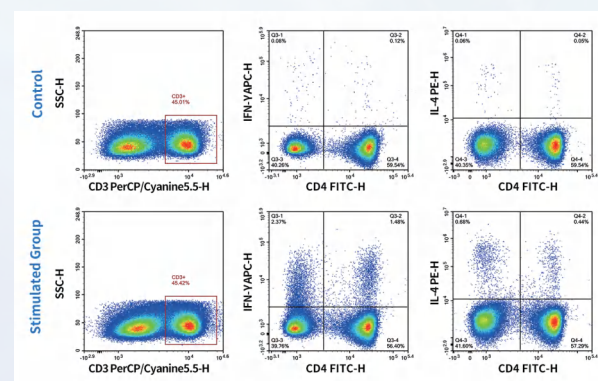


Phenotypic analysis of M1 polarized RAW 264.7 macrophages: Flow cytometry analysis of untreated RAW 264.7 cells cultured for 48 h and RAW 264.7 cells polarized using [RAW 264.7 Polarized M1 Macrophage Culture and Identification Kit \(XJM004\)](#) for 48 h of polarization induction.

Results of Human/Mouse Th1/Th2 Flow Cytometry Staining Kit



Detection of Th1/Th2 cells in PBMCs using [Human Th1/Th2 Flow Cytometry Staining Kit \(XJH001\)](#): Results from normal PBMCs (Control) and PBMCs stimulated with Cell Stimulation MIX (Stimulation group).



Detection of Th1/Th2 cells in C57 mouse spleen cells using [Mouse Th1/Th2 Flow Cytometry Staining Kit \(XJM001\)](#): Results from normal C57 mouse spleen cells (Control) and C57 mouse spleen cells stimulated with Cell Stimulation MIX (Stimulation group).

Elabscience Bionovation Inc.

Toll-free: 1-888-852-8623

Tel: 1-832-243-6086

Fax: 1-832-243-6017

Web: www.elabscience.com

Email: orders@elabscience.com; techsupport@elabscience.com

EFL054-2502V1